

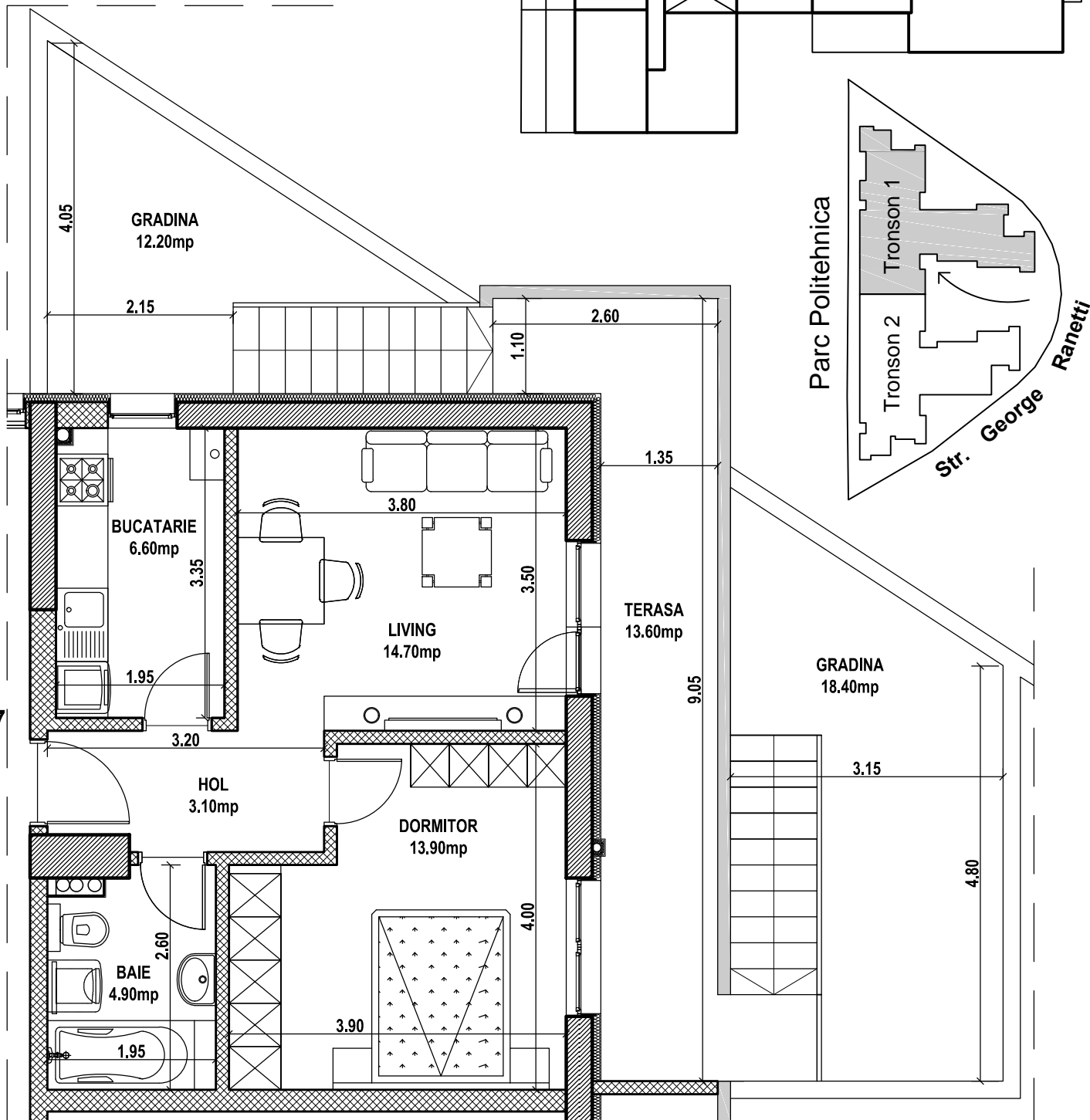
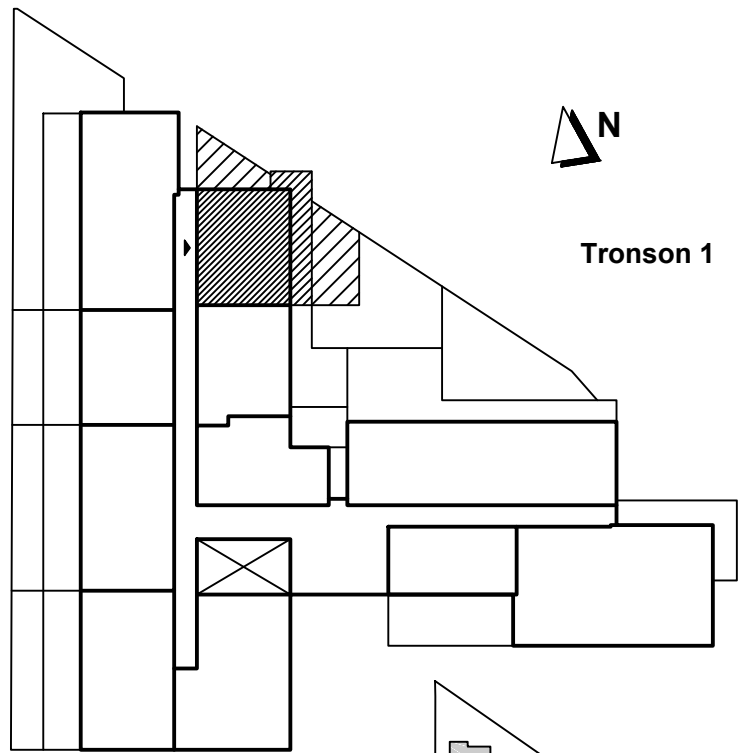
# Apartment 2 camere - 1007, parter, tronson 1

## Str. George Ranetti, Nr. 2-8, Sector 6

Total suprafata construita apartament = 104.70 mp,  
din care:

- suprafata construita terasa = 15.70 mp
- suprafata construita gradini = 35.00 mp

Total suprafata utila apartament = 56.80 mp



AP. 1007

